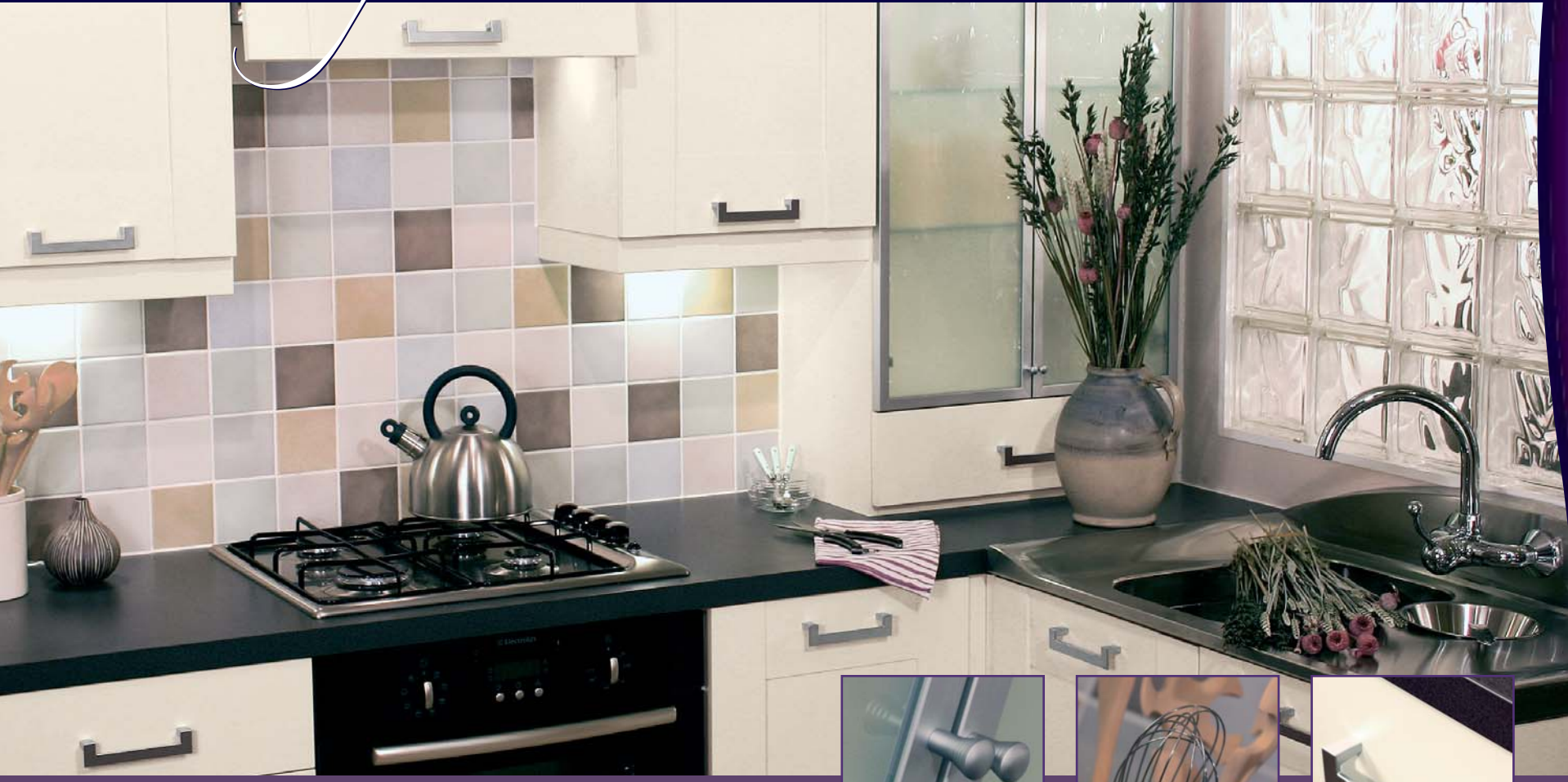
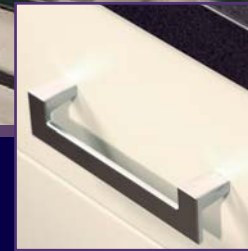
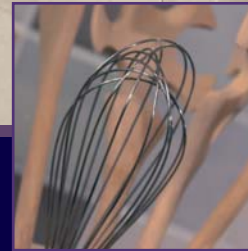


Cologne ALABASTER



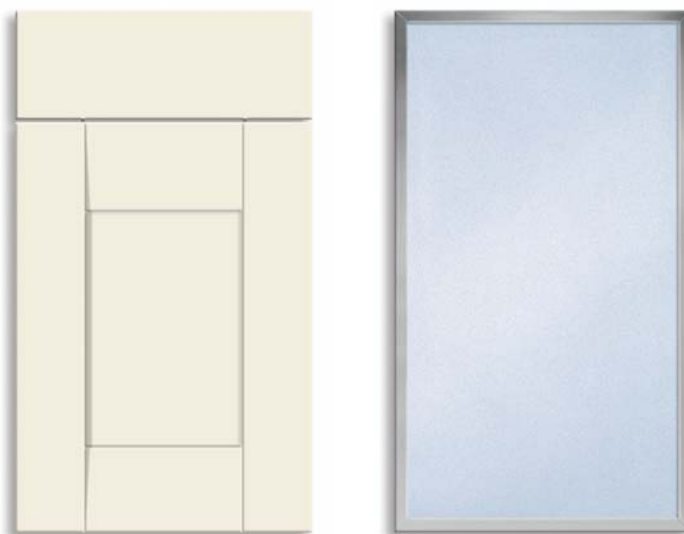
Bring your Kitchen to Life



PAULLA ROSA

COLOGNE Alabaster technical specification

DOOR OPTIONS



Alabaster

Brushed Aluminium/
Glass (plain/frosted)

Cologne takes its inspiration from the simple Shaker style, giving it a new dimension and appeal.

With the choice of Alabaster (as shown) or Maple and Bleached Oak, combined with the ultra wide frames and wedge shaped door features, Cologne moves the Shaker concept into a new era. The doors are 5-piece construction using foil-wrapped MDF sections around a flat 6mm MFC centre-panel.

Feature options are available in matching Alabaster finish and glazed doors are brushed aluminium frames, with either plain or frosted glass. Open feature units (Alabaster colour MFC with 0.5mm lipping), carry the Shaker look through your kitchen.

HANDLE/KNOB OPTIONS

NOTE: Handles are vertical on handed doors, horizontal on lift-up doors and drawers unless specified.

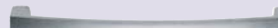
Bar Handle

Satin Nickel •184• PN° 16670



Curved D Handle

Matt Nickel •160• PN° 29202



•96• PN° 29200



For 300 drawers and lift-up doors only

Twisted Bar Handle

Antique Pewter •160• PN° 27816



•96• PN° 27814



For 300 drawers and lift-up doors only

Drop D Handle

NOTE: Handles are horizontal and central on all doors and drawers.

Matt Chrome •128• PN° 27812



•64• PN° 27810



For doors and drawer fronts ≤400 only

CARCASS COLOUR

Alabaster Double Décor

PLINTH OPTIONS

Standard

2.6m x 135mm PN° 030373

Alabaster
Aluminium Grey

Upgrade

2.6m x 135mm PN° 030370

Brushed Aluminium

LIGHT PELMET

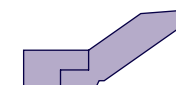
NOTE: Supplied in 3m lengths only. Order by part number and quantity of lengths.



Type 4 - Alabaster PN° 32941

CORNICE

NOTE: Supplied in 3m lengths only. Order by part number and quantity of lengths.



Type 6 - Alabaster PN° 32940

FRONT RAIL

NOTE: Supplied in 3m lengths only. Order by part number and quantity of lengths.



Type 2 - Alabaster PN° 71502



Tested by FIRA to BS 6222 (1997): Part 2 to test level H



Paula Rosa, Water Lane, Storrington, West Sussex RH20 3DS Telephone: 01903 746666 Facsimile: 01903 742140 www.paularosa.com

Paula Rosa is a member of the Ballingslöv Group of Companies

Whilst every effort is made to ensure product consistency, wood is a natural product and variations in grain and colour are to be expected.

Colours may alter in the course of time and any such changes are not covered by our Guarantee. Paula Rosa reserves the right to alter specifications or make changes to our range in our continuous effort to offer the highest quality products.